

Overlay Test Kit – Advanced Performance

Accessories

ADVANCED PAVEMENTS TESTING SYSTEMS



IPC Global's Overlay Test Kit increases the functionality of the AMPT Pro, AMPTQube, Universal Testing Machine (UTM), Asphalt Standards Tester (AST) and AsphaltQube.

The advanced design provides high stiffness and extremely low compliance. This additional hardware kit enables the AMPT Pro, AMPTQube, UTM, AST and AsphaltQube to conduct the Overlay Test for fatigue cracking which can be incorporated into Mechanistic-Empirical design system for flexible pavements.

Also available is the specimen preparation kit which allows for quick and easy specimen set-up.

Specifications

Features

- Increases the functionality of AMPTs, AsphaltQube, Asphalt Standards Tester and UTMs
- Advanced design for high stiffness and extremely low compliance
- High precision linear guides to ensure perfect axial loading alignment and no lateral rotation
- Specialized test kit designed for easy set-up
- IPC Global's UTS Software allows for quick and easy set-up and running of test
- Overlay test investigates properties required for predicting both crack propagation and crack initiation
- Available with on-jig and on-specimen transducers
- Specimen preparation kit allows for quick and easy gluing and set-up.

Test Standards

TxDOT Designation: Tex-248-F (4.2mm gap)
Draft ASTM WK26816 (2.0mm gap)

Dimensions and Weight

Overlay Tester Kit	12kg
Specimen Preparation Kit	8kg
Specimen Platen	1kg

*Weights may vary based of kit configuration

Ordering Information

- 79-PV70680 – Overlay Test Kit
- 79-PV70681 – Overlay Test Specimen Plates
- 79-PV70682 – Triple Specimen Preparation Kit for 2.0mm and 4.2mm gaps
- 79-PV70684 – Triple Glue Jig Spacer Bar 4.2mm
- 79-PV70683 – Single Specimen Preparation Kit for 2.0mm and 4.2mm gaps
- 79-PV70685 – Single Glue Jig Spacer Bar 4.2mm
- 79-UTS0036 – UTS036 Overlay Test Software

Additional accessories may be required to create a working testing system. Please contact us for advice.

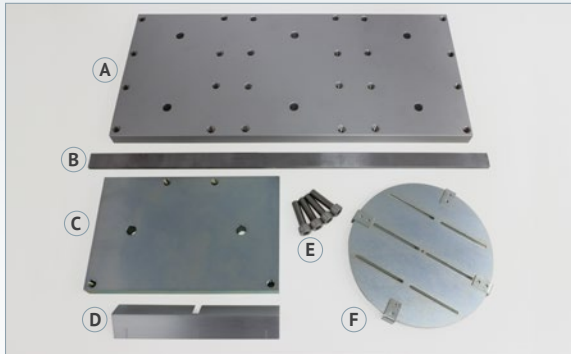
Specimen Preparation Kits

Triple Specimen Preparation Kit (79-PV70682)

includes: Triple Specimen Gluing Jig, M8 Head Cap Screws, Specimen Template and Straight Edge.

Single Specimen Preparation Kit (79-PV70683)

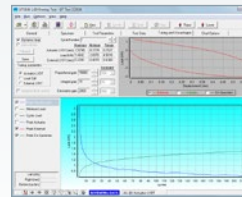
includes: Single Specimen Gluing Jig, M8 Head Cap Screws, Specimen Template and Straight Edge.



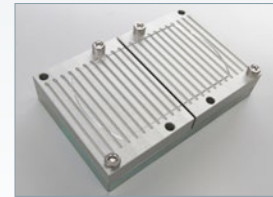
A. Triple Specimen Gluing Jig – B. Triple Glue Jig Spacer Bar 4.2mm – C. Single Specimen Gluing Jig – D. Straight Edge – E. M8 Head Cap Screws – F. Specimen Template.

How It Works

The Overlay Test Kit is designed to be used with IPC Global's market leading AMPT, Universal Testing Machines or the Asphalt Standards Tester. For flexible pavements, fatigue cracking is one of the major distress modes and has been studied for several decades. Overlay test based fatigue cracking model is one method used to predict fatigue cracking development to be incorporated into Mechanistic-Empirical design systems. Overlay test based fatigue cracking takes into consideration both crack initiation and crack propagation stages. This simple to conduct test allows fatigue testing on thin lifts of asphalt, from both laboratory made or field cored specimens.



UTS036 Overlay Test Software



Specimen Platens (79-PV70681) on Single Gluing Jig

► IPC Global Customer Care

At IPC Global we are proud of our products.

We are dedicated to supplying high quality, accurate, affordable, easy-to-use systems for Advanced Testing of asphalt, binders and other pavement materials. As a valued customer of IPC Global you will receive continuous, expert support and advice for your instrument. Furthermore, we offer full installation and training in the correct operation of your IPC Global equipment. For support from our expert Customer Care Team, contact your local IPC Global-Controls office/distributor or email ipcglobalsupport@controls-group.com.

Visit our website for more information www.controls-group.com/ipcglobal.



► Contact Us

IPC Global

E ipcglobalsales@controls-group.com www.controls-group.com/ipcglobal

Controls Group USA

2521 Technology Drive, Suite 203, Elgin, IL 60124, USA T +1 847 551 5775 E info@controls-usa.com www.controls-usa.com

Controls Group

T +39 02 92184 1

F +39 02 92103 333

E sales@controls-group.com

www.controls-group.com

France

www.controls.fr

Italy

www.controlsitalia.it

Iraq

www.controlsmiddleeast.com

Mexico

www.controls.com.mx

Poland

www.controls.pl

UK

www.controlstesting.co.uk

Spain

www.controls.es

www.controls-group.com/ipcglobal